



Energy for
generations

Cloon - Glenamaddy 38 kV Overhead Line Typical Sample 38 kV Structure Imagery





Energy for generations

Typical 38 kV Lines within local landscape



* Typical 38 kV Single pole (Shorter span technology)



* Typical 38 kV Single pole



* Typical 38 kV Single pole



* Typical 38 kV Double Pole (longer span technology)



* Typical 38 kV Double Pole (longer span technology)

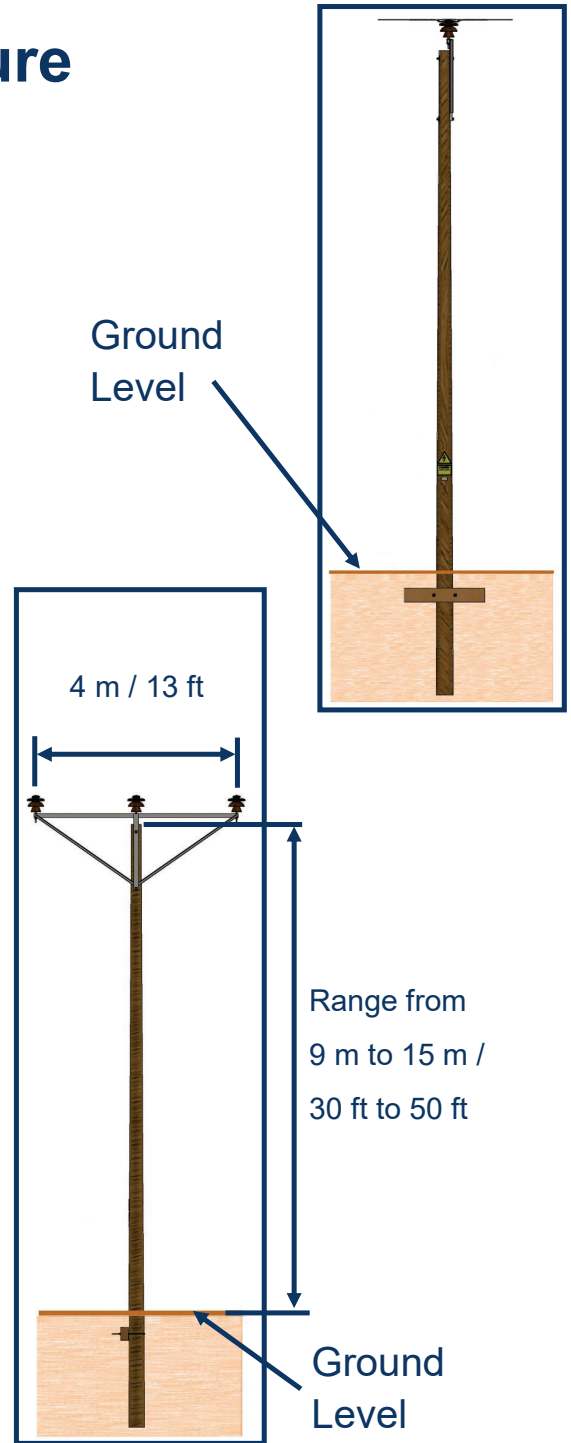
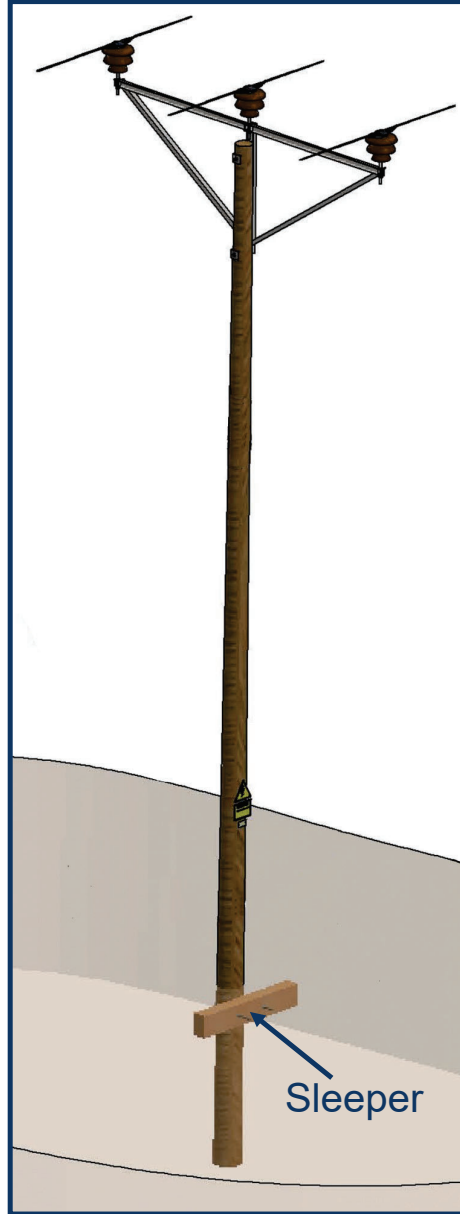


* Typical 38 kV Double Pole (longer span technology)



Energy for generations

Single Pole Intermediate Structure



* Shorter Spans

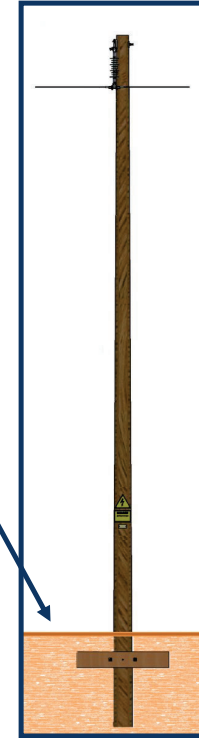
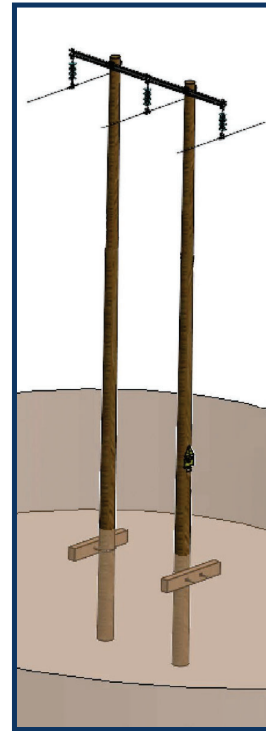


Energy for generations

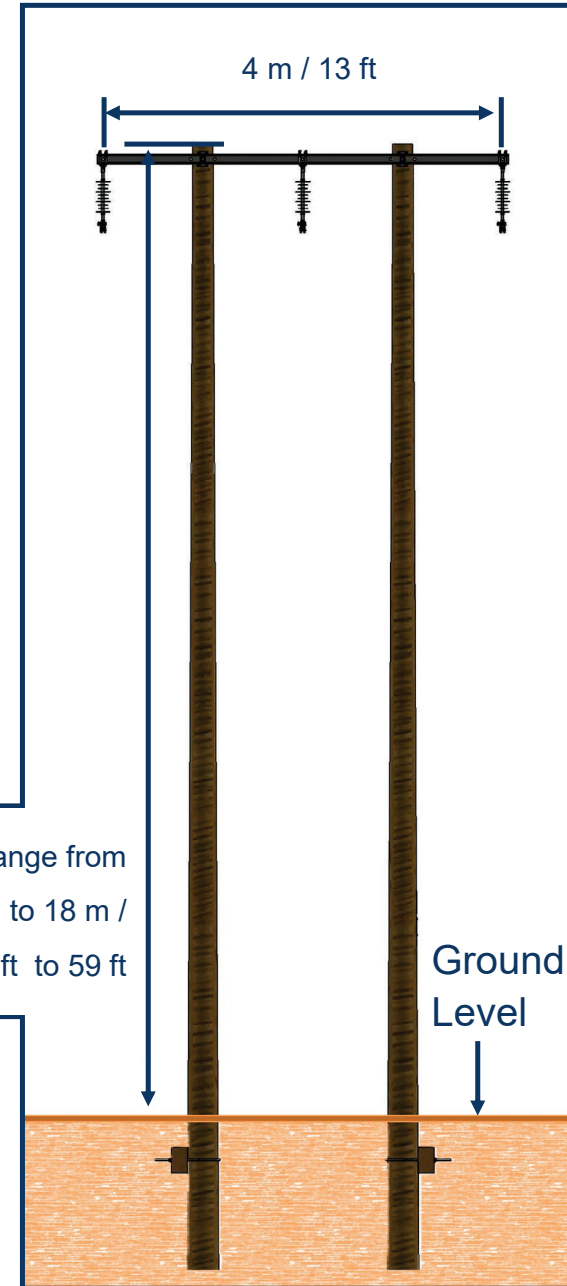
Double Pole Intermediate Structure



* Longer Spans



Ground Level



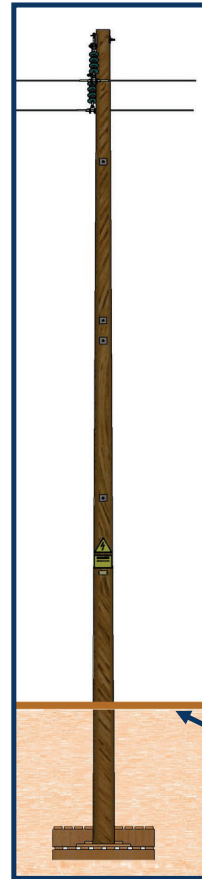
Range from
9 m to 18 m /
30 ft to 59 ft

Ground Level



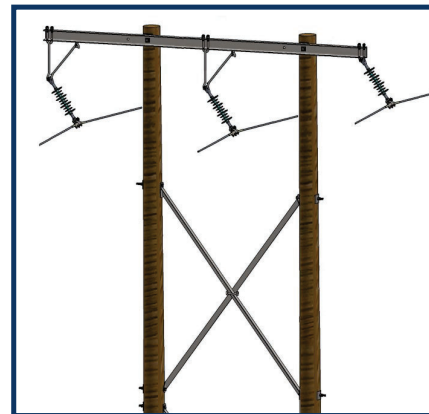
Energy for generations

Suspension Light Angle Structure

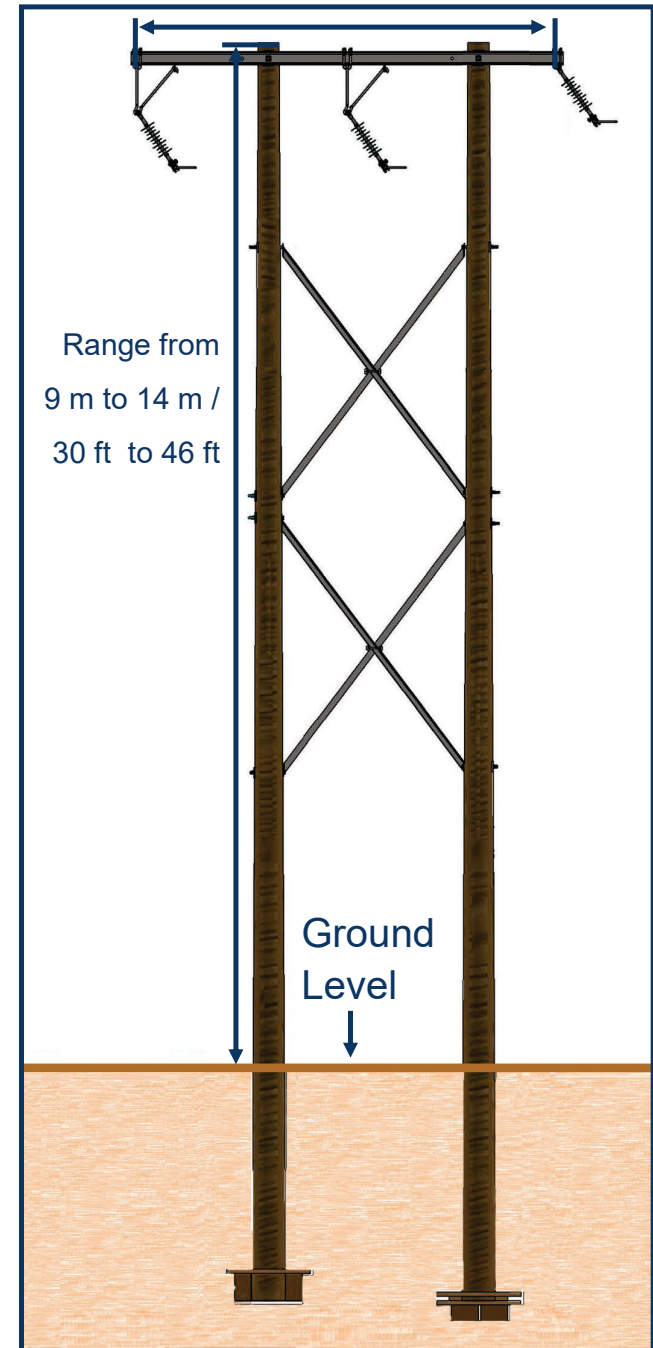


* Changes in direction

Ground Level



4 m / 13 ft



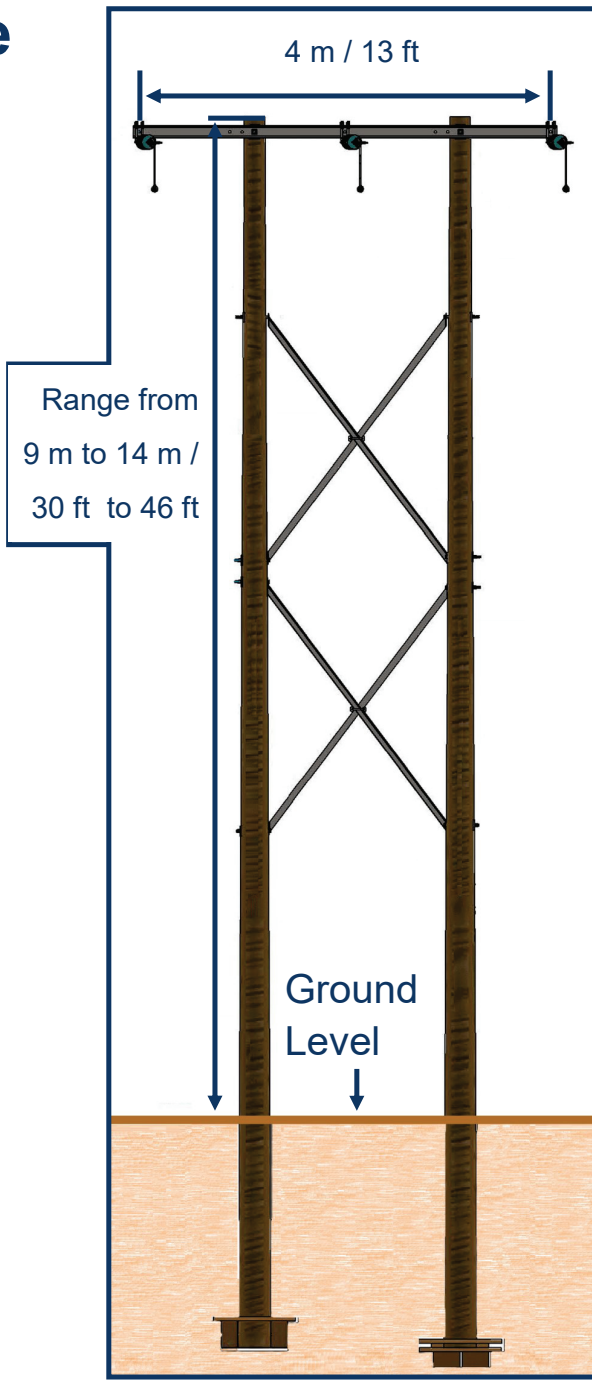
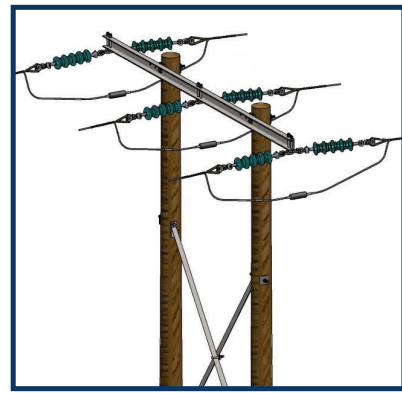
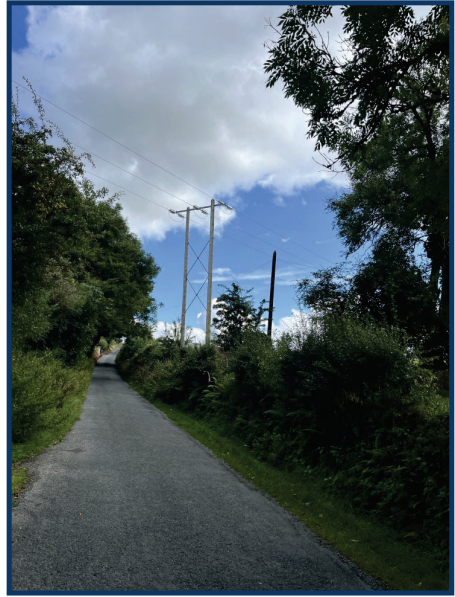
Range from
9 m to 14 m /
30 ft to 46 ft

Ground Level



Energy for generations

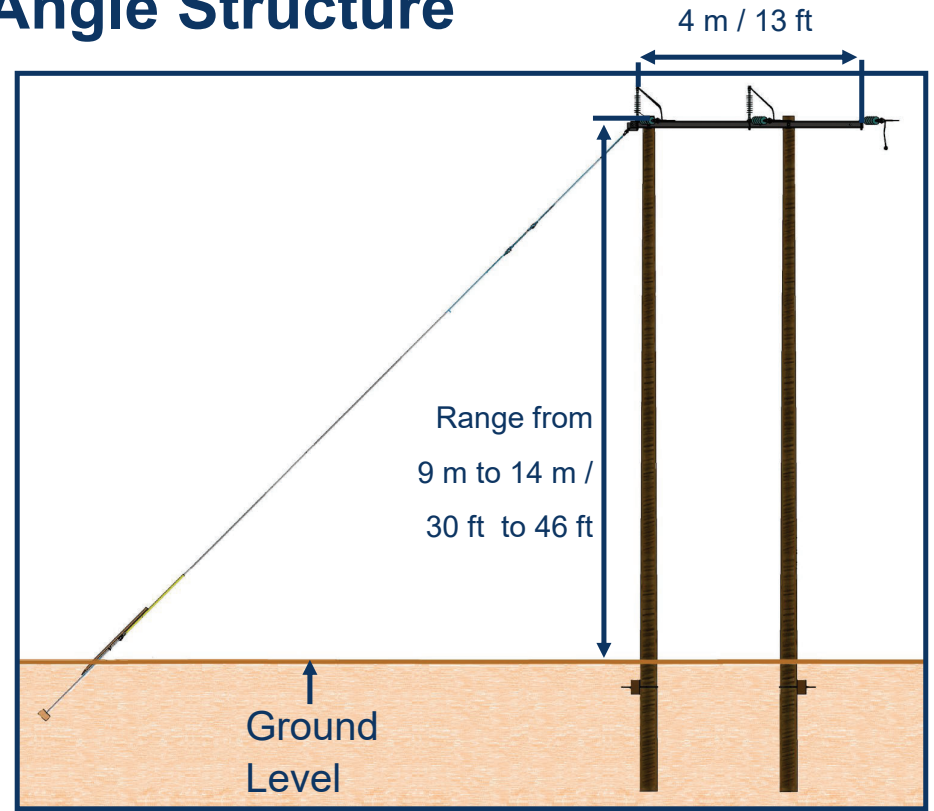
Tension Light Angle Structure



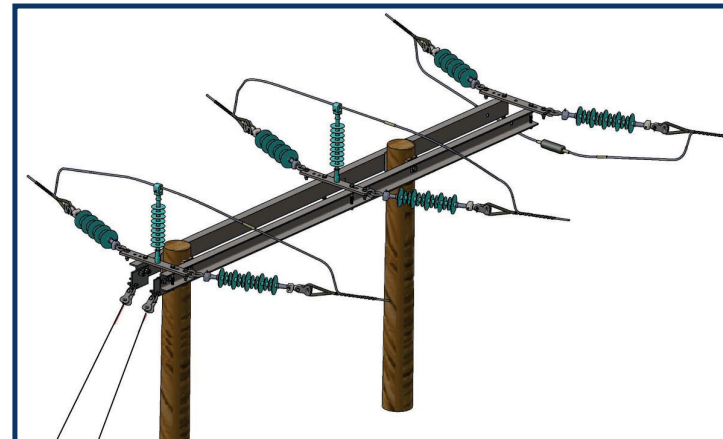


Energy for generations

Tension Heavy Angle Structure



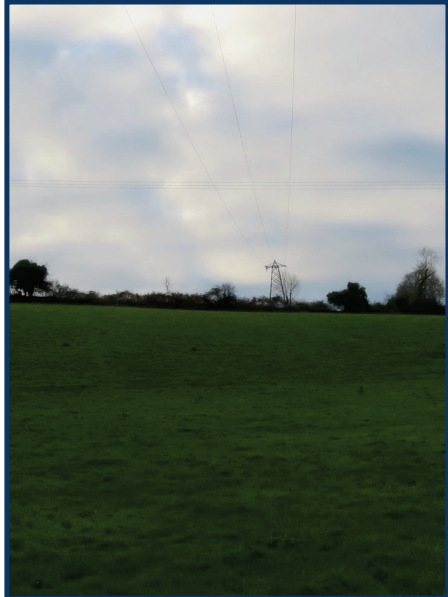
* Larger changes in direction





Energy for generations

Mast



* Termination in substations or significant changes in line direction.

